



GALOSTAR

Case Study - Belle Vue - formerly Bartrams, Hampstead

Galostar have completed a retirement residential project in Hampstead where our willingness to collaborate and innovation was brought to the forefront.

Galostar's scope of work included design development from Stage 4 - Stage 5 for both architectural and structural elements.

Our belief that a blend of excellent artisan brickwork and innovative modern building techniques can lead to remarkable outcomes was proven to the most exceptional levels.

The project has been awarded a RIBA Regional 2022 award as testament to the high quality delivery of such a demanding façade.

<https://www.architecture.com/awards-and-competitions-landing-page/awards/riba-regional-awards/riba-london-award-winners/2022/belle-vue>







Galostar were contracted under Contract Management form of contract and were tasked with developing the design intent into a full construction design.

The task was extremely intricate due to the level of detail set out within the design intent. This was compounded further by the tapered brickwork which lead to reduced cavities and in turn affected the required U-Values.

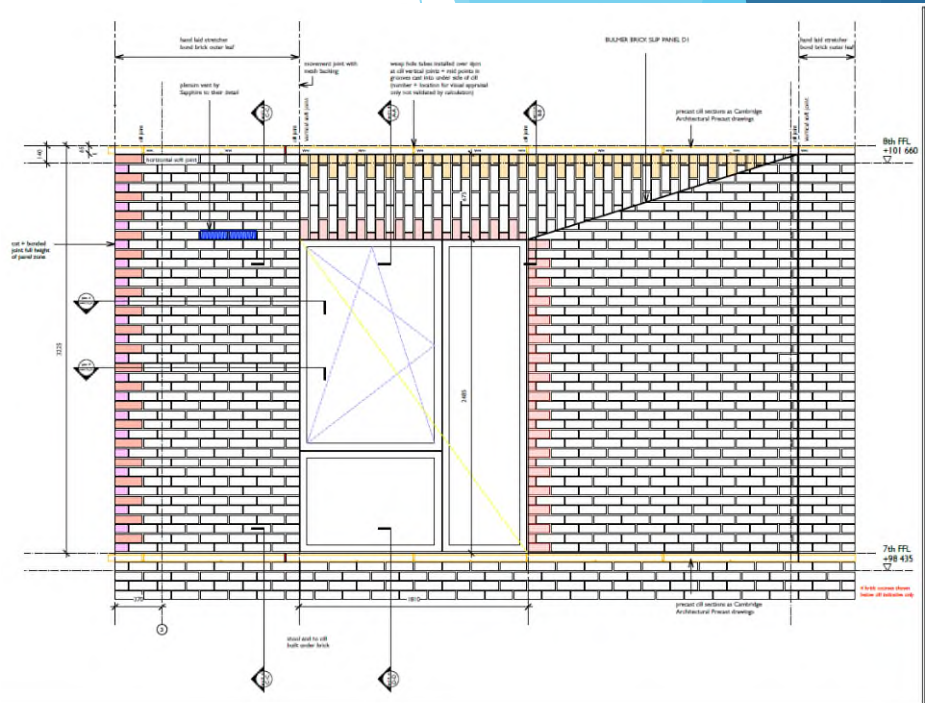
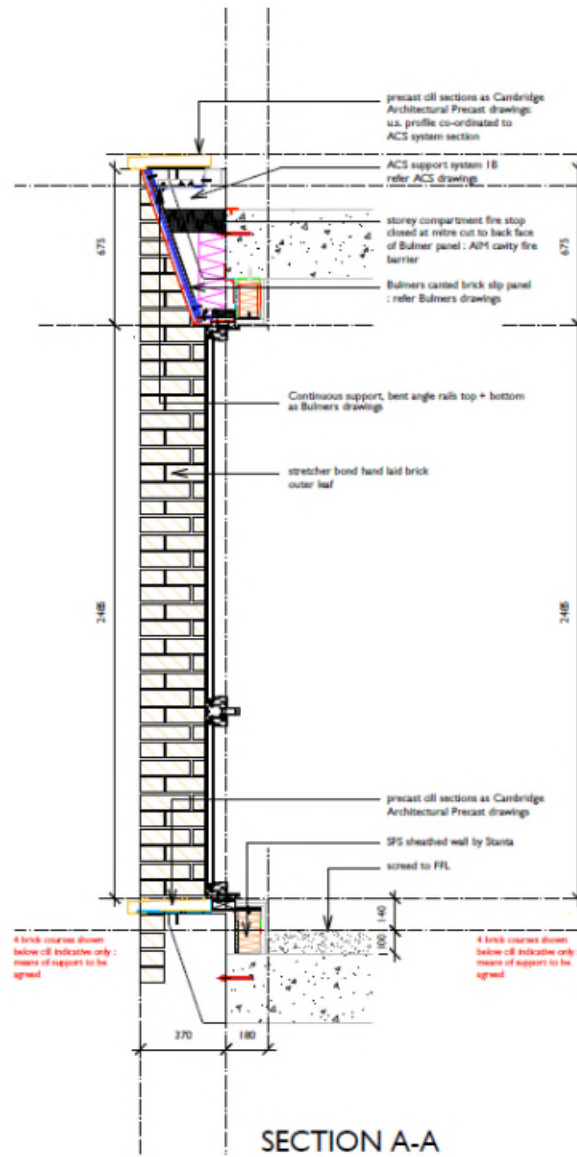
Galostar researched the market and proposed Bulmers Safe Secure system for all chamfers and tapered brickwork. This afforded enough room within the cavity to maintain the required U-Values.

With the implementation of the panelled brickwork, a structural support frame had to be designed by our engineers. Once designed, ACS were appointed to manufacture the bespoke support system.



We believe that such a design is one of the only of its kind. Given this knowledge, Galostar developed full working drawings for a full scale mock up that was constructed in situ on the project. Lessons learned were recorded for future reference for all parties and improvements were implemented prior to construction of the project commencing.

The Project was completed to the highest standard, on time and on budget. The client was extremely happy with the delivery of the facade. Further to this, Belle Vue was awarded a RIBA Regional award.





Mock Up Panel in situ